

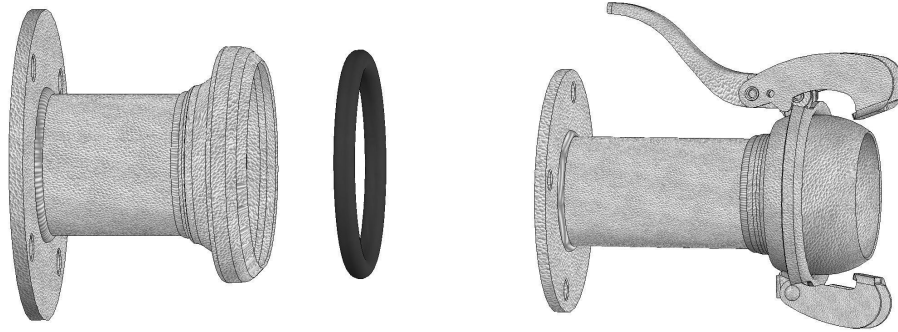


Pump Accessories and Wellpoint Equipment





Galvanized Fittings



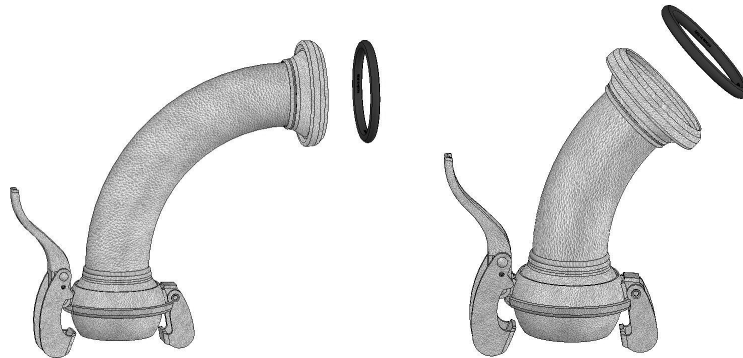
FLANGE X BALL AND FLANGE X SOCKET	PART NUMBER
4" Flange x Ball	W70-FTG-GAL-4BXFA
6" Flange x Ball	W70-FTG-GAL-6BXFA
8" Flange x Ball	W70-FTG-GAL-8BXFA
4" Flange x Socket	W70-FTG-GAL-4SXFA
6" Flange x Socket	W70-FTG-GAL-6SXFA
8" Flange x Socket	W70-FTG-GAL-8SXFA



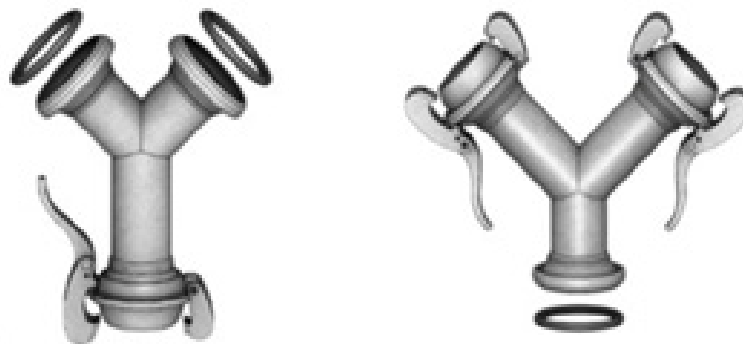
BALL X PIPE THREAD AND SOCKET X PIPE THREAD	PART NUMBER
4" Ball x Long Male Pipe Thread With Lever	W70-FTG-GAL-4BXMTL
6" Ball x Male Pipe Thread With Lever	W70-FTG-GAL-6BXMT
8" Ball x Male Pipe Thread With Lever	W70-FTG-GAL-8BXMT
4" Socket x Male Pipe Thread With O Ring	W70-FTG-GAL-4SXMT
6" Socket x Male Pipe Thread With O Ring	W70-FTG-GAL-6SXMT
8" Socket x Male Pipe Thread With O Ring	W70-FTG-GAL-8SXFT



Galvanized Fittings



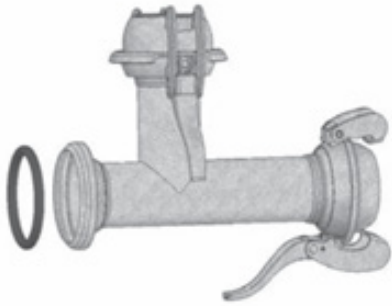
GALVANIZED ELBOWS	PART NUMBER
4" X 45 deg Ball x Socket	W70-ELL-GAL-4X45
6" X 45 deg Ball x Socket	W70-ELL-GAL-6X45
8" X 45 deg Ball x Socket	W70-ELL-GAL-8X45
4" X 90 deg Ball x Socket	W70-ELL-GAL-4X90
6" X 90 deg Ball x Socket	W70-ELL-GAL-6X90
8" X 90 deg Ball x Socket	W70-ELL-GAL-8X90



GALVANIZED WYE	PART NUMBER
4" Galvanized Wye type B socket x ball x ball	W70-Y-GAL-4B-FMM
4" Galvanized Wye type B ball x socket x socket	W70-Y-GAL-4B-MFF
6" Galvanized Wye type B socket x ball x ball	W70-Y-GAL-6B-FMM
6" Galvanized Wye type B ball x socket x socket	W70-Y-GAL-6B-MFF
8" Galvanized Wye type B socket x ball x ball	W70-Y-GAL-8B-FMM
8" Galvanized Wye type B ball x socket x socket	W70-Y-GAL-8B-MFF



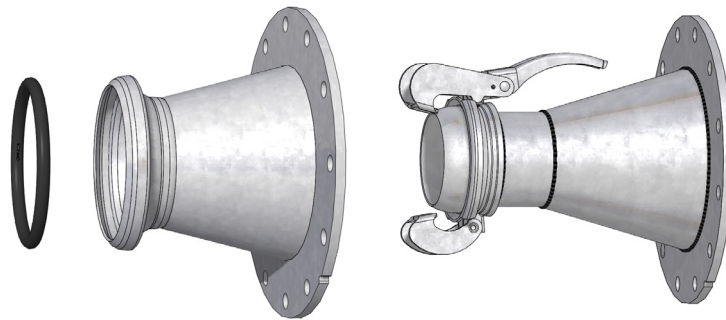
Galvanized Fittings



GALVANIZED TEE	PART NUMBER
4" Galvanized Tee type B socket x ball x ball	W70-TEE-GALB-4S4B4B
4" Galvanized Tee type B ball x socket x socket	W70-TEE-GALB-4S4S4B
6" Galvanized Tee type B socket x ball x ball	W70-TEE-GALB-6S6B6B
6" Galvanized Tee type B ball x socket x socket	W70-TEE-GALB-6S6S6B
8" Galvanized Tee type B socket x ball x ball	W70-TEE-GALB-8S8B8B
8" Galvanized Tee type B ball x socket x socket	W70-TEE-GALB-8S8S8B



GALVANIZED CAP	PART NUMBER
4" Cap socket type B with O ring	W70-CAP-GAL-4S
6" Cap socket type B with O ring	W70-CAP-GAL-6S
8" Cap socket type B with O ring	W70-CAP-GAL-8S



GALVANIZED REDUCERS	PART NUMBER
12" Flange x 6" Ball	W70-RED-GAL-12FX6B
12" Flange x 6" Socket	W70-RED-GAL-12FX6S
12" Flange x 8" Ball	W70-RED-GAL-12FX8B
12" Flange x 8" Socket	W70-RED-GAL-12FX8S
8" Flange x 6" Ball	W70-RED-GAL-8FX6B
8" Flange x 6" Socket	W70-RED-GAL-8FX6S



Strainers

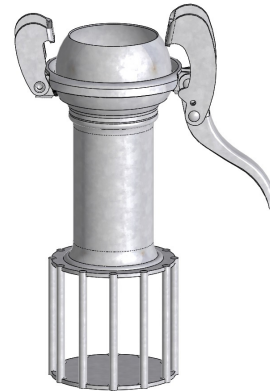
BOLT AND GASKET KITS	PART NUMBER
4" Steel nuts, bolts, washers and gaskets	W70-BOLTPACK-4
6" Steel nuts, bolts, washers and gaskets	W70-BOLTPACK-6
8" Steel nuts, bolts, washers and gaskets	W70-BOLTPACK-8
12" Steel nuts, bolts, washers and gaskets	W70-BOLTPACK-12



ROUND HOLE STRAINER



SQUARE HOLE STRAINER



SEWAGE HOLE STRAINER

GALVANIZED ROUND HOLE STRAINERS	PART NUMBER
4" Round hole strainer	W70-STR-4RH
6" Round hole strainer	W70-STR-6RH
8" Round hole strainer	W70-STR-8RH

GALVANIZED SQUARE HOLE STRAINERS	PART NUMBER
4" Square hole strainer	W70-STR-4SH
6" Square hole strainer	W70-STR-6SH
8" Square hole strainer	W70-STR-8SH

GALVANIZED SEWAGE HOLE STRAINERS	PART NUMBER
4" Sewage hole strainer	W70-STR-4SEW
6" Sewage hole strainer	W70-STR-6SEW
8" Sewage hole strainer	W70-STR-8SEW



Hoses



SUCTION HOSE HEAVY DUTY	PART NUMBER
4" x 20' Rubber suction hose Ball x Socket	W70-1702R-4X20BLXSKT
6" x 20' Rubber suction hose Ball x Socket	W70-1702R-6X20BLXSKT
8" x 20' Rubber suction hose Ball x Socket	W70-1702R-8X20BLXSKT



DISCHARGE HOSE MEDIUM PRESSURE	PART NUMBER
4" x 50' Red PVC discharge hose Ball x Socket	W70-MP-4X50-BXS
6" x 50' Red PVC discharge hose Ball x Socket	W70-MP-6X50-BXS
8" x 50' Red PVC discharge hose Ball x Socket	W70-MP-8X50-BXS

DISCHARGE HOSE HEAVY DUTY	PART NUMBER
4" x 50' Nitrile discharge hose Ball x Socket	W70-HP-4X50-BXS
6" x 50' Nitrile discharge hose Ball x Socket	W70-HP-6X50-BXS
8" x 50' Nitrile discharge hose Ball x Socket	W70-HP-8X50-BXS



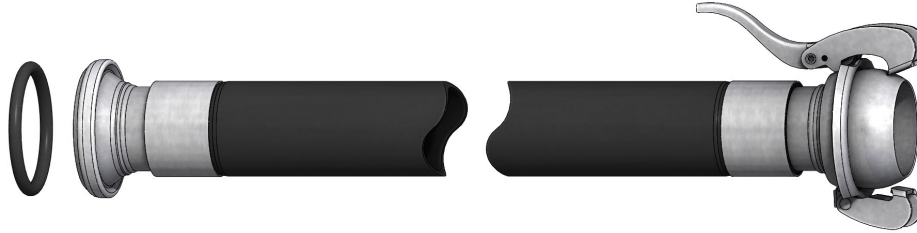
O RINGS	PART NUMBER
4" O Ring type B anti oil	W70-RING-4B
6" O Ring type B anti oil	W70-RING-6B
8" O Ring type B anti oil	W70-RING-8B

BERMS AND GROUND COVER	PART NUMBER
8' x 10' x 6" Hinge bracket berm	W70-BERM-8X10-H
8' x 10' x 12" L bracket berm	W70-BERM-8X10-L
8' x 10' L Ground cover	W70-BERM-GC810

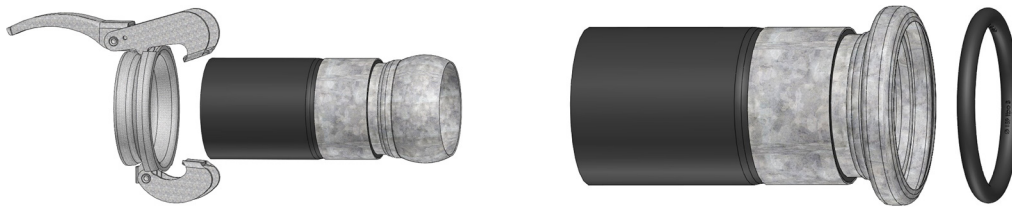
FILTRATION BAGS	PART NUMBER
15' x 15'	W70-FIL-BAG-15X15



HDPE Pipe



HDPE	PART NUMBER
6" x 20ft HDPE DR17 Pipe – BxS Type B	W70-PC-HDPE6X20-17
8" x 20ft HDPE DR17 Pipe – BxS Type B	W70-PC-HDPE8X20-17
12" x 20ft HDPE DR17 Pipe – BxS Type B	W70-PC-HDPE12X20-17



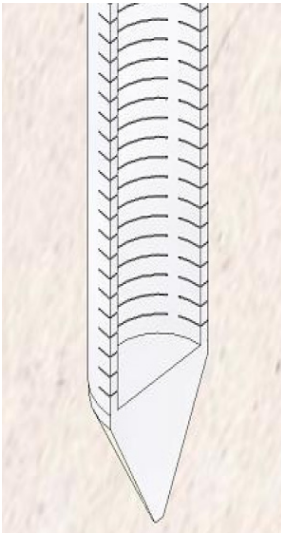
HDPE	PART NUMBER
4" HDPE DR17 Tale x Ball Type B	W70-PC4BXHDPE-17-B
6" HDPE DR17 Tale x Ball Type B	W70-PC6BXHDPE-17-B
8" HDPE DR17 Tale x Ball Type B	W70-PC8BXHDPE-17-B
12" HDPE DR17 Tale x Ball Type B	W70-PC12BXHDPE-17-B

HDPE	PART NUMBER
4" HDPE DR17 Tale x Socket Type B	W70-PC4SXHDPE-17-B
6" HDPE DR17 Tale x Socket Type B	W70-PC6SXHDPE-17-B
8" HDPE DR17 Tale x Socket Type B	W70-PC8SXHDPE-17-B
12" HDPE DR17 Tale x Socket Type B	W70-PC12SXHDPE-17-B

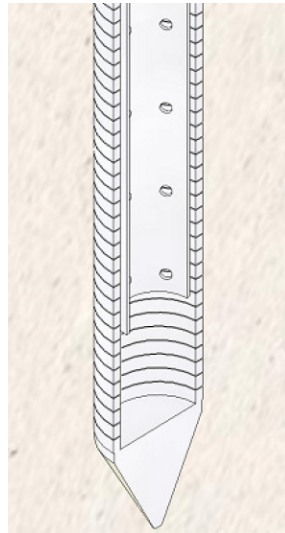
FLOAT BALL	PART NUMBER
18" Float ball	W70-FLOAT-BALL-18



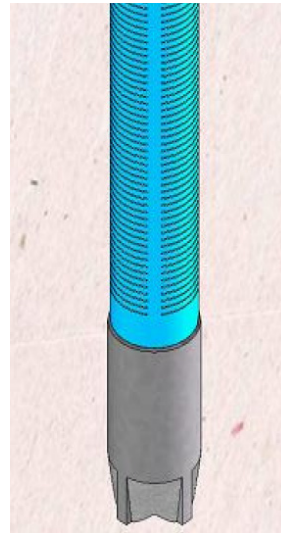
Wellpoint Equipment



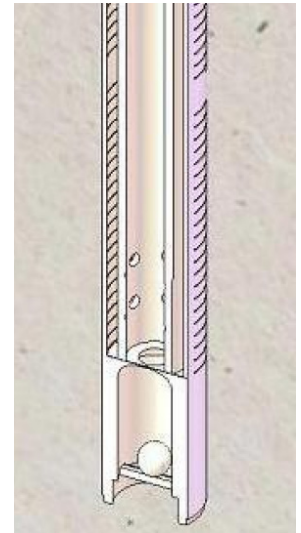
ECONOMY



PREMIUM



STEEL



GAT

WELLPOINT	PART NUMBER
<p>3' x 1.5" Wellpoint no drop tube (economy)</p> <p>The 1.5" economy wellpoint is the industry standard for dewatering due to its light weight, durability, and affordability. Utilized in conjunction with punch or stingers and applicable sand filter packs, the economy wellpoint is compatible with a wide range of soils where groundwater needs to be controlled.</p>	W70-WPT-ECO-1.5
<p>23' x 1.5" Wellpoint no drop tube with 20' riser pipe</p>	W70-WPT-ECO-1.5WR
<p>3' x 1.5" Wellpoint with drop tube (premium)</p> <p>The premium PVC wellpoint offers a built-in drop tube on top of the features that the economy wellpoint has to offer. This built-in drop tube routes ground-water to the bottom of the wellpoint to allow for maximum drawdown regardless of screen exposure above the water table</p>	W70-WPT-PRE-1.5
<p>23' x 1.5" Wellpoint with drop tube with 20' riser pipe</p>	W70-WPT-PRE-1.5WR
<p>2" x 3' Steel self jetting wellpoint</p> <p>The 2" self-jetting steel wellpoint features the toughest material construction to match the toughest soil conditions. Its durable construction allows for prolonged use on longer term dewatering projects as well as reuse capability over multiple installations. Its built-in galvanized steel drop tube routes groundwater to the bottom of the wellpoint to allow for maximum drawdown regardless of screen exposure above the water table. This inner drop tube also reduces dissipation of pressure through the screen. The drop tube and aluminum thrust generating head allows for a more effective jet when utilizing the self-jetting feature for installation.</p>	W70-WPT-STL-1.5I
<p>3' x 1.5" PVC GAT self jetting wellpoint</p> <p>The GAT wellpoint is PVC with SCH 40 PVC drop tube and is capable of self-jetting. Suitable for a wide range of soil conditions where groundwater control is a must, the GAT wellpoint is well balanced option for durability and affordability. Its built-in drop tube routes groundwater to the bottom of the wellpoint to allow for maximum drawdown regardless of screen exposure above the water table. This inner drop tube also reduces dissipation of pressure through the screen, which allows for a more effective jet when utilizing the self-jetting feature for installation.</p>	W70-WPT-GAT-1.5



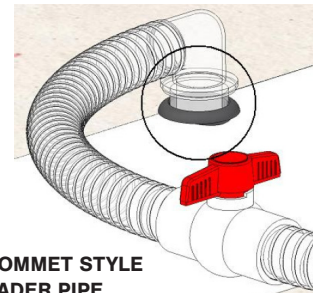
Wellpoint Equipment



**THOMPSON STYLE
HEADER PIPE**

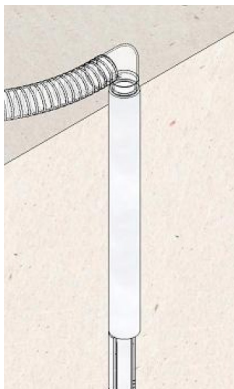


THOMPSON STYLE HEADER PIPE

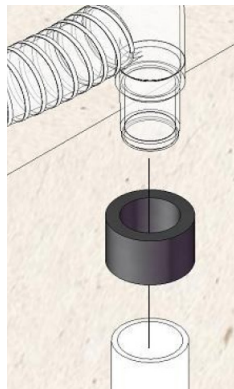


**GROMMET STYLE
HEADER PIPE**

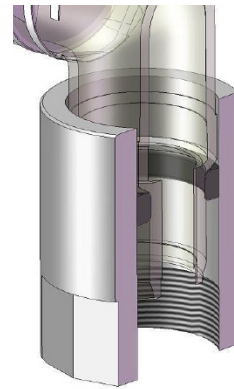
HEADER PIPE	PART NUMBER
Used to direct ground water to the pump. The Thompson header pipe includes a valve to adjust the flow of the system.	
6" x 20' Thompson style header pipe on 3' centers	W70-HDR6-3
8" x 20' Thompson style header pipe on 3' centers	W70-HDR8-3
8" x 20' Thompson style header pipe on 18' centers	W70-HDR8-18
6" x 20' Grommet style header pipe on 3' centers	W70-1006-001NS



**PVC RISER
PIPE**

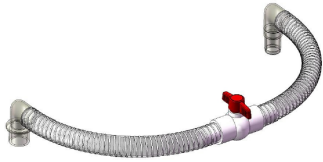


**VINYL
RISER TOP**



**ALUMINUM RISER TOP
WITH RUBBER WASHER**

RISER PIPE	PART NUMBER
Vinyl Riser Top Rubber cap for the PVC riser pipe that helps create an air tight seal between the swing and the riser pipe.	W70-TOP-RSR-V
20' x 1.5" Belled end PVC schedule 60 riser pipe The 20 foot PVC pipe is used to lengthen the wellpoint to achieve a desired depth.	W70-RSRP-1.5BE
Galvanized riser pipe threaded and cut to length	W70-RSRG-LCT
Aluminium Riser top (use with steel wellpoints) The aluminum riser top is used with the steel wellpoint and threaded to connect with the aluminum riser pipe.	W70-TOP-RSR-A
Small rubber washer (use with aluminium riser top)	W70-WASH-RSR-RBR



BALL VALVE SWING JOINT

Swing joint with an integral ball valve fitted in the center, allows for control flow of air and water to the header pipe from the wellpoints.

PART NUMBER

1.5" x 3' Swing with ball valve (grommet header)

W70-SWING-1.5X3BV



SWING JOINT

Clear flexible hose that connects the riser pipe to the header valve assembly.

PART NUMBER

1.5" x 3' Swing no ball valve (Thompson header)

W70-SWING-1.5X3SD



HEADER COUPLING WITH STRAPS

Flexible rubber sleeve with stainless steel clamps to temporarily connect header pipes. Choice of standard 6" or 8" diameters to match the header pipe.

PART NUMBER

6" Rubber header coupling with straps

W70-CPLG-HDR-6WS

8" Rubber header coupling with straps

W70-CPLG-HDR-8WS



HEADER COUPLING STRAP

PART NUMBER

6" Header coupling strap

W70-HDRST-6SS

8" Header coupling strap

W70-HDRST-8SS



PVC CAP W/NIPPLES



90 DEG PVC ELBOW WITH NIPPLES



PVC TEE WITH NIPPLES

PVC CAP, ELBOW AND TEE	PART NUMBER
6" PVC cap with nipples	W70-CAP-PVC-6WN
8" PVC cap with nipples	W70-CAP-PVC-8WN
6" X 90 deg PVC elbow with nipples	W70-ELL-PVC-6X90WN
8" X 90 deg PVC elbow with nipples	W70-ELL-PVC-8X90WN
6" PVC tee with nipples	W70-TEE-PVC-6WN
8" PVC tee with nipples	W70-TEE-PVC-8WN



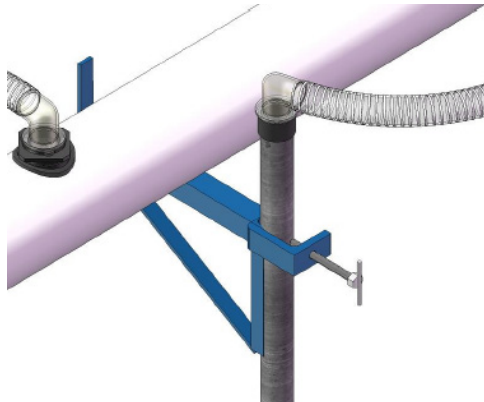
Accessories



HEADER VALVE ASSEMBLY	PART NUMBER
6" Completed header valve assembly	W70-VAL-PVC-6
8" Completed header valve assembly	W70-VAL-PVC-8



CLAY



HEADER PIPE SUPPORT



JET FITTING

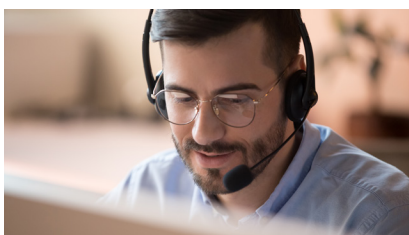


VALVE WRENCH



JET PUNCH

ACCESSORIES	PART NUMBER
2lb Wellpoint clay	W70-WPT-CLAY
Header pipe support	W70-HDR-SUPPORT
Jet fitting	W70-FTG-JET-C
Valve wrench	W70-WRENCH-VAL
4" x 21' Jet punch	W70-2704-021



Personal Assistance

Please feel free to get in touch with us at 800-767-7310 for assistance with customizing or locating hard-to-find products, as we provide a complete range of personalized accessories.



FLORIDA SHERIFFS ASSOCIATION
COOPERATIVE PURCHASING PROGRAM

